

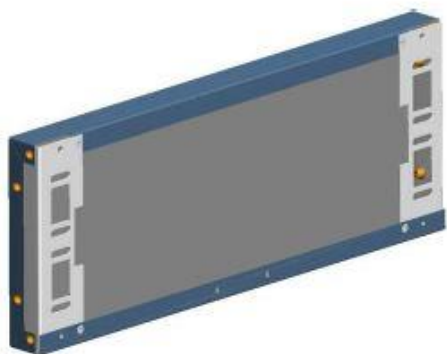
# INSTRUCTION MANUAL

- Hoistway Doorframe
- Hoistway Doorframe Cabinet



HOISTWAY DOORFRAME TELESOPING RIGHT

## COMPONENT



ARCHITRAVE x 1



UNDER SILL x 1



LEFT UPRIGHTS x 1



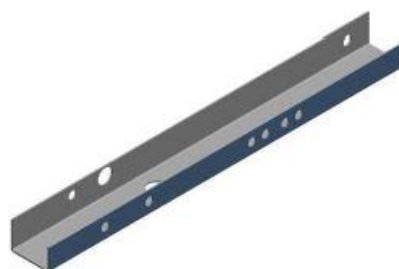
RIGHT UPRIGHTS x 1



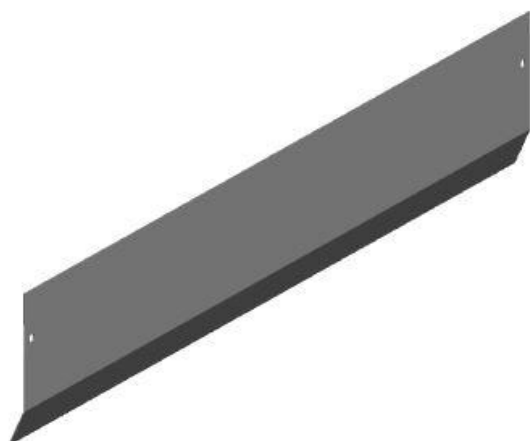
SEAT DOOR x 1



COVER THE SILL x 1



TELESCOPING COMPONENT x 1



APRON x 1



BRACKET x 5



M8x20 x 6



M6x20 x 5  
M8x20 x 8  
M8x25 x 3



M5x10 x 2



M5 x 2  
M6 x 5  
M8 x 3



M6 x 3

## ASSEMBLY HOISTWAY DOORFRAME

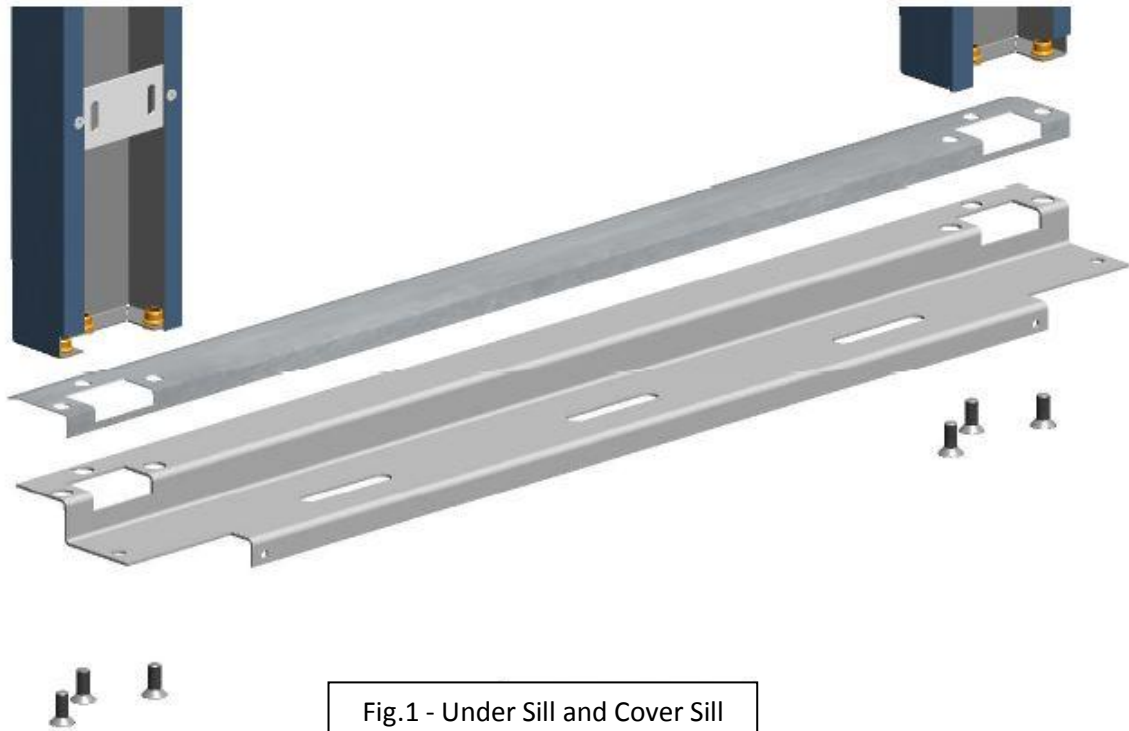


Fig.1 - Under Sill and Cover Sill

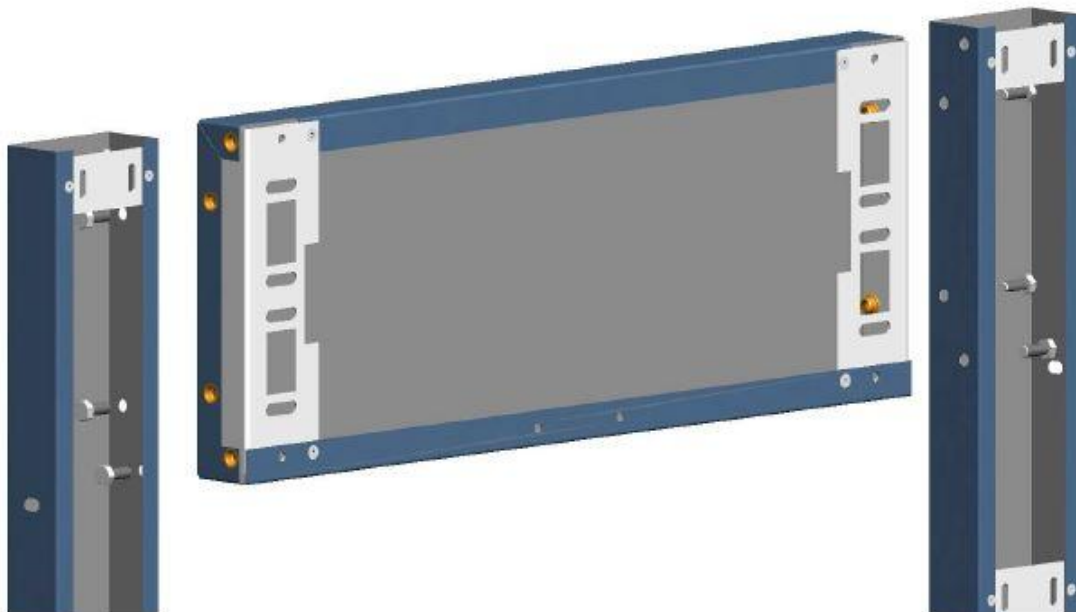


Fig.2 - Architrave

Fix under the sill and the steel sill cover in the uprights with countersunk screws M8x20 and the lintel with the hexagonal head screws M8x20 (as in Figures 1 and 2).

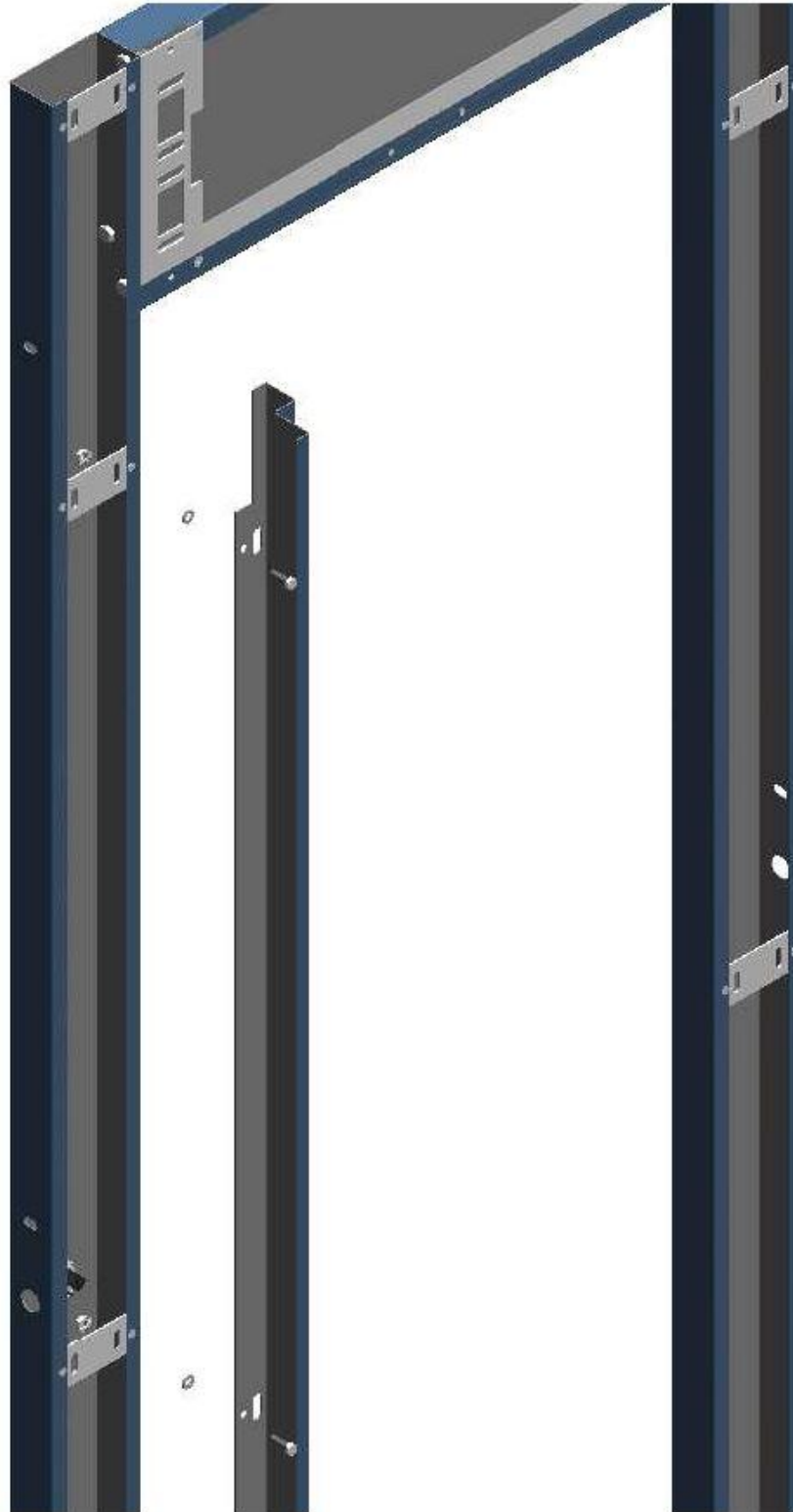


Fig.3 - Seat Door

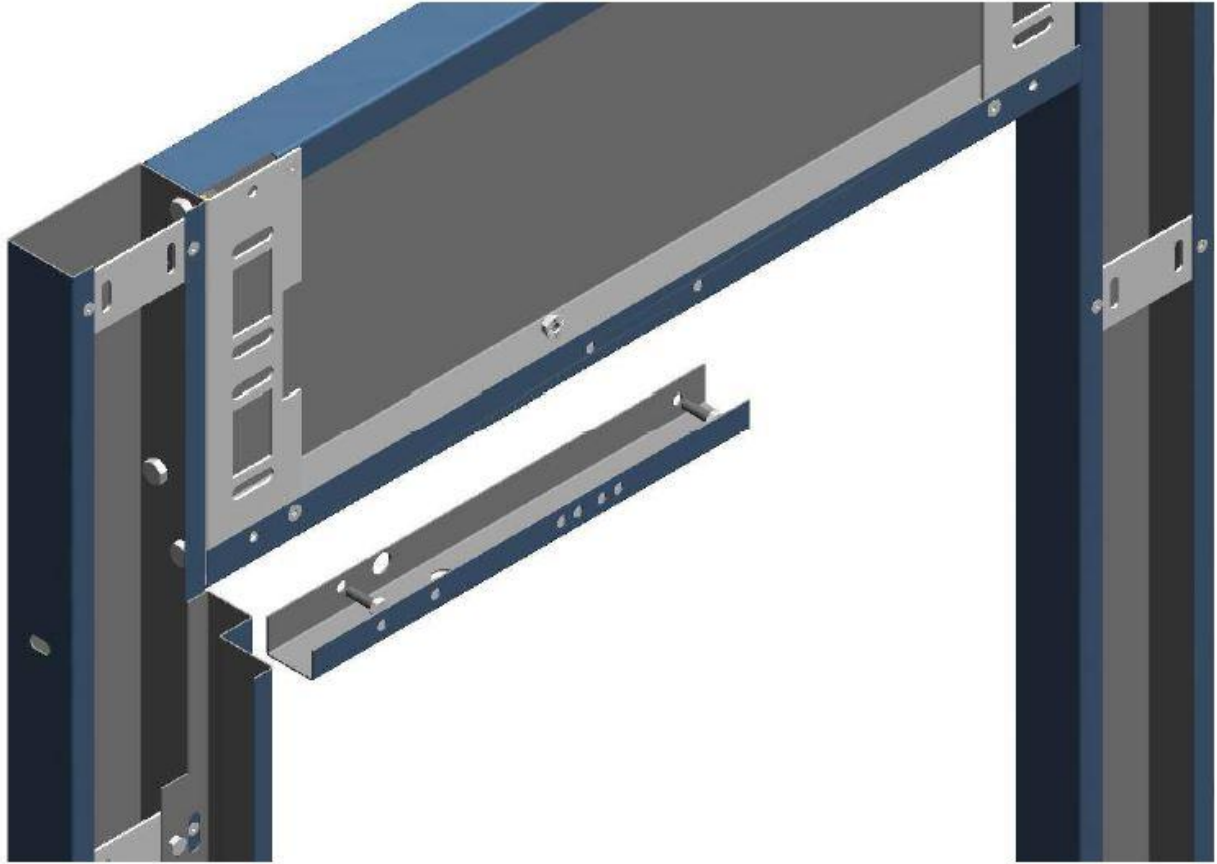
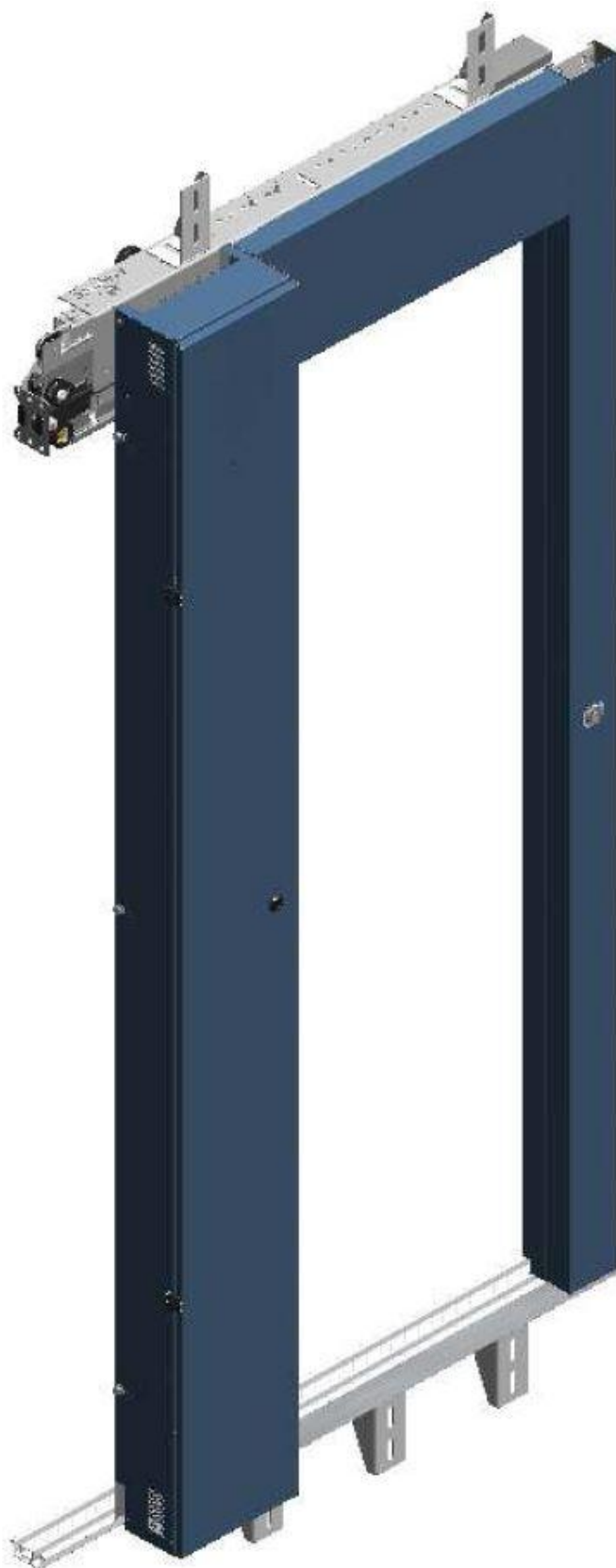


Fig.4 - Telescoping Component

With the screws M6x20 to fix the seat door leaving a washer between the seat itself and platelets installed (as in Figure 3) and telescoping component (Figure 4).

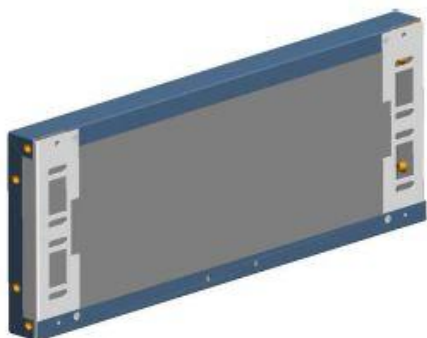
Push the seat door at the top to beat the telescoping component and tighten the screws.



**HOISTWAY DOORFRAME CABINET TELESOPING RIGHT**

**IF EQUIPPED – Other go to page 15**

## COMPONENT



ARCHITRAVE x 1



UNDER SILL x 1



DOOR CABINET x 1



RIGHT UPRIGHTS x 1



SEAT DOOR x 1





EXTERNAL CARTER x 1



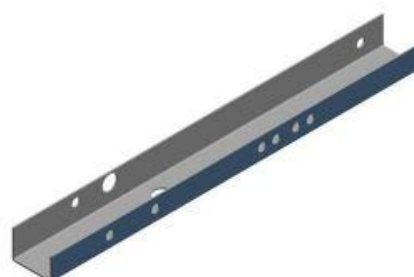
INTERNAL CARTER x 1



CABLES CARTER x 1



COVER THE SILL x 1



TELESCOPING COMPONENT x 1



TOP COVER x 1



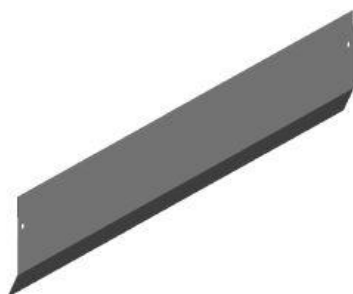
BRACKET CABINET x 1



BRACKET x 5



DOCUMENT HOLDER x 1



APRON x 1



HINGE x 2



CLOSING x 1



LEVER LOCKING x 1



M8x20 x 5



M6x20 x 5  
M8x20 x 11  
M8x25 x 3



M5x10 x 5



M5 x 5  
M6 x 5  
M8 x 8



M6 x 3



3,5x9,5 x 3

## ASSEMBLY HOISTWAY DOORFRAME CABINET

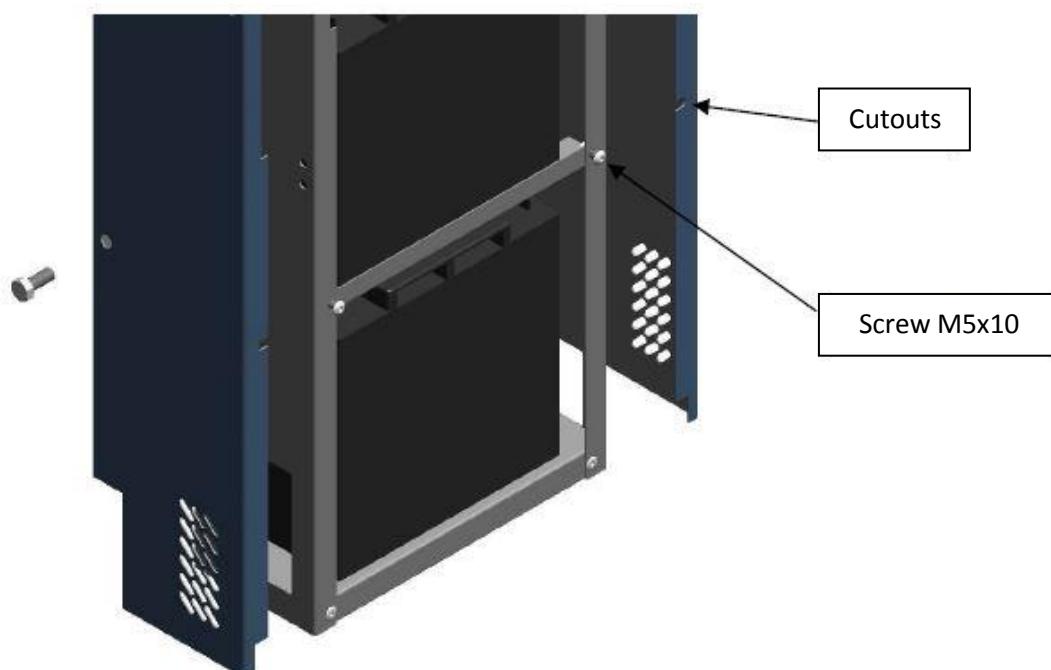
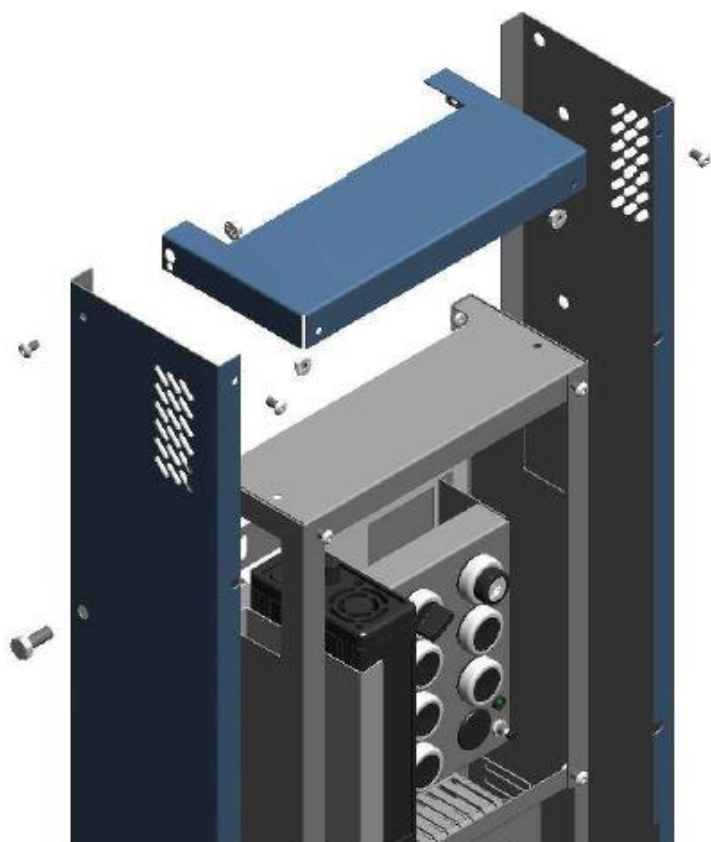


Fig.5 – Cabinet Cover

After loosening the 6 round head screws M5x10 cabinet frame, position the lateral sides by matching the appropriate cutouts with those screws (fig 5) and tighten the screws again.  
Complete coating with the upper casing

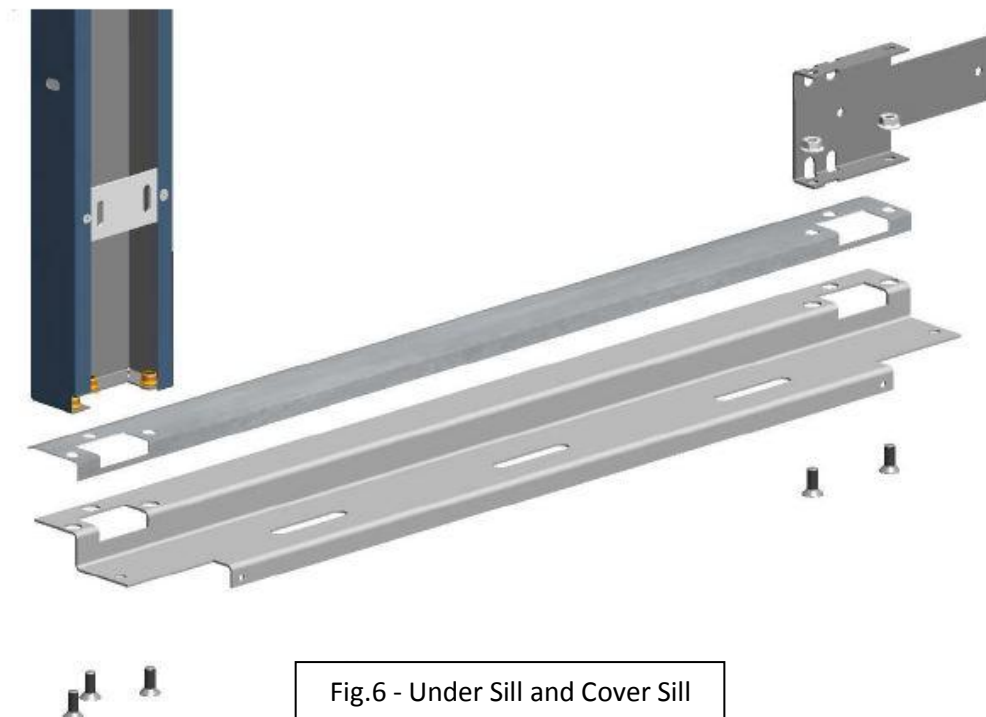


Fig.6 - Under Sill and Cover Sill

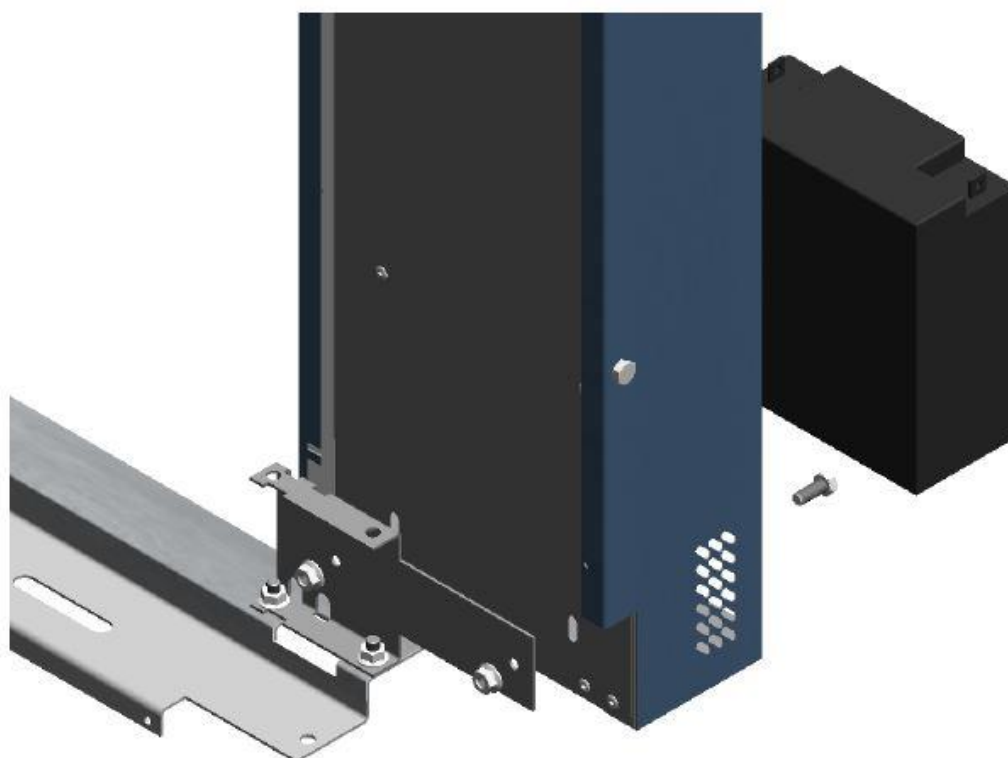


Fig.7 - Fixing Base Cabinet

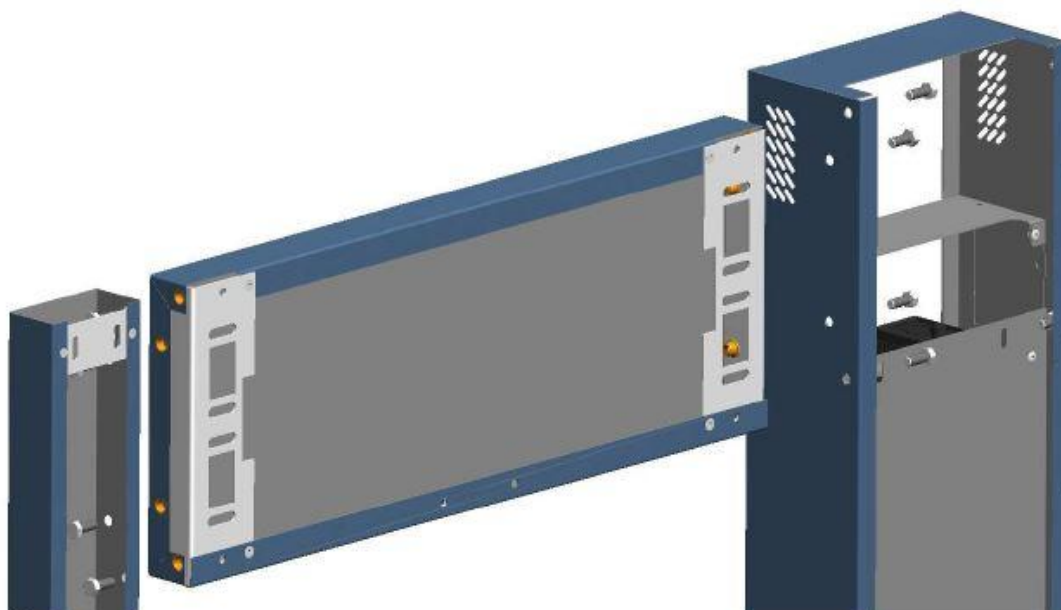


Fig.8 – Architrave Cabinet

Fix under the sill and the steel sill cover in the uprights and the bracket cabinet with countersunk screws M8x20 (Figure 6). Remove the battery bottom of the enclosure with hexagonal head screws M8x20 lock on the bracket mounted above (Figure 7). Assemble the lintel with the hexagonal head screws M8x20 (Figure 8).

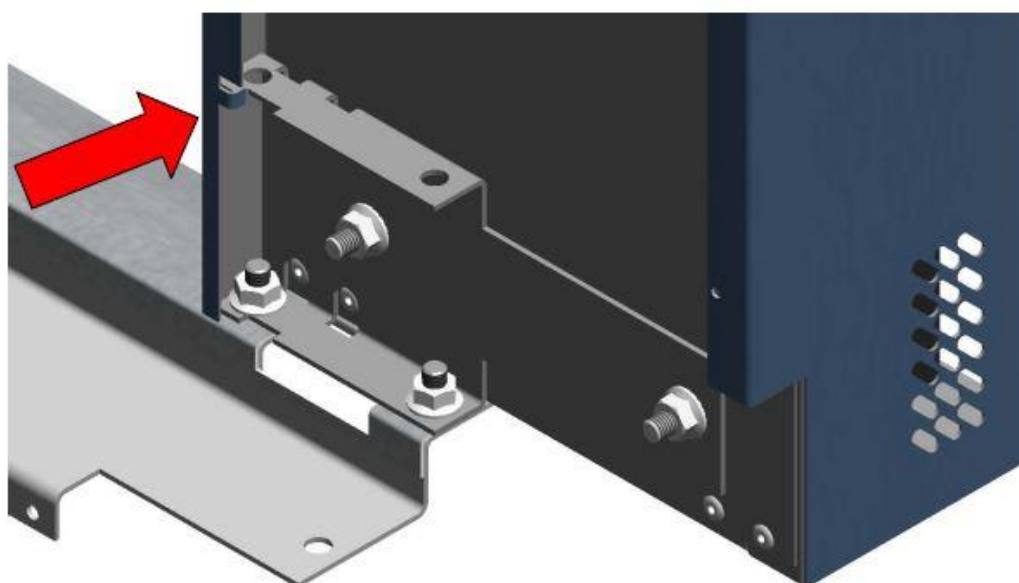


Fig.9 – Stop Tab

With pliers or a screwdriver to bend the tab of the cover on the bracket so as to lock the cabinet (as the red arrow in Figure 9).

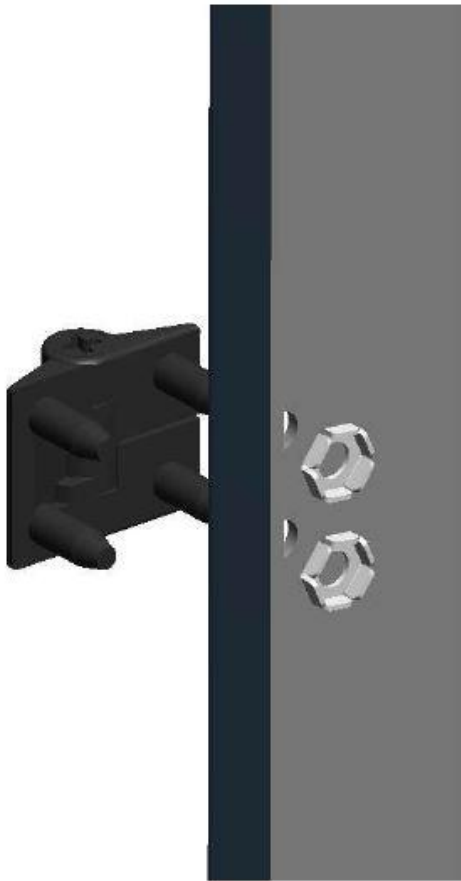


Fig.10 – Hinge

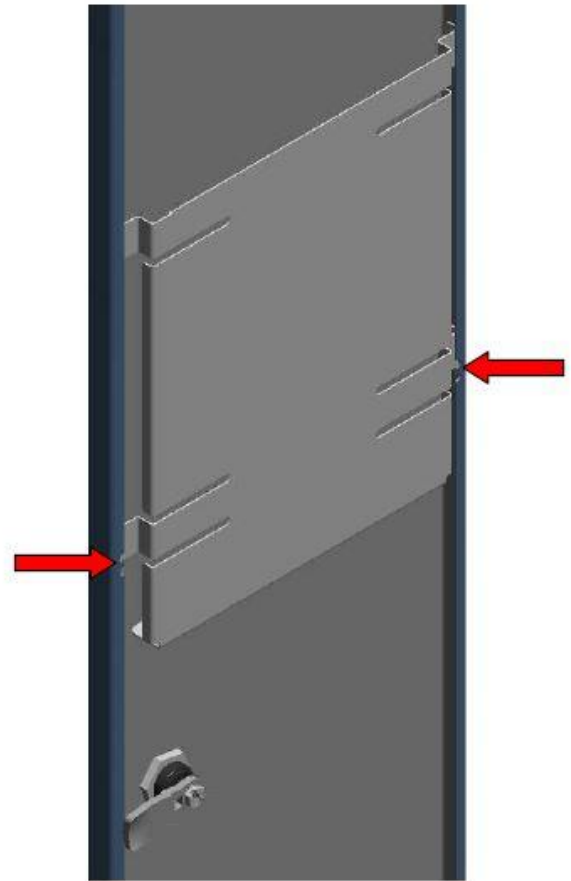


Fig.11 – Closing

Assemble the hinges into the holes, secure with nuts in plate (fig.10) and repeat the operation with the door. Assemble the closure block and its lever. Bend lightly with a pair of pliers on the two tabs on the sides of the door (see arrows fig.11) and insert on top of them, snap the document holder.

Complete the assembly with the eventual seat door and relative telescoping component as for frames without cabinet (as shown in Figure 3 and 4).

## ASSEMBLY SILL AND DOOR LOCKING MECHANISM



Fig.12 – Sill

Insert the screws M8x25 in the channel of the sill and fix together with the brackets (figure 12).

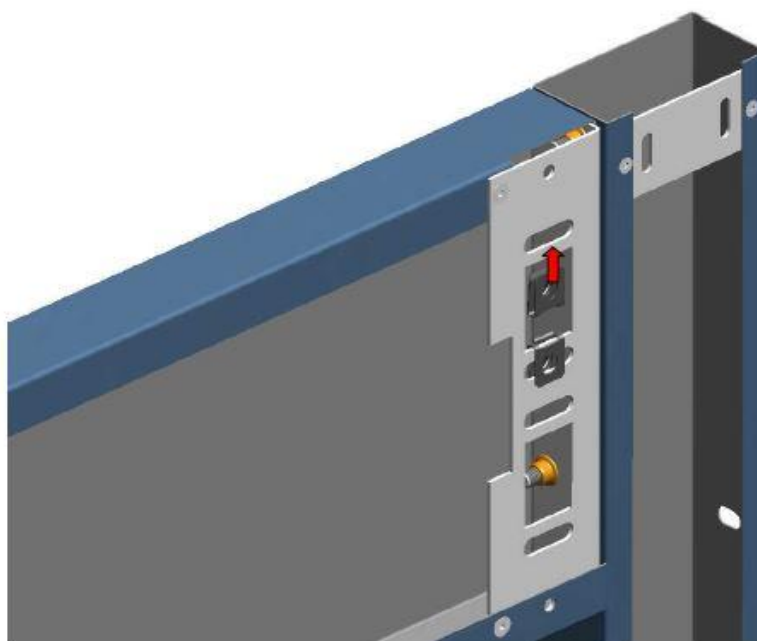


Fig.13 – Clips



Fig.14 – Door Closing Mechanism



Fig.15 – Bracket for Door Closing Mechanism



Assemble the Door Closing Mechanism with threaded clip (Figure 13) and the supplied screws to the same (Figure 14). Lock the Door Closing Mechanism with the two brackets (Figure 15).

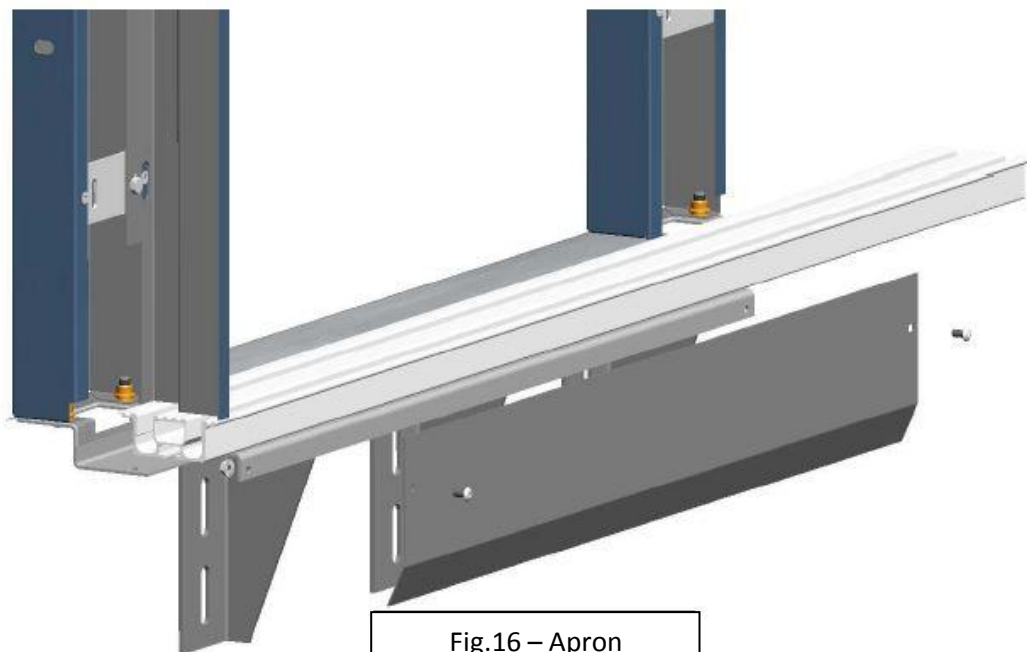


Fig.16 – Apron

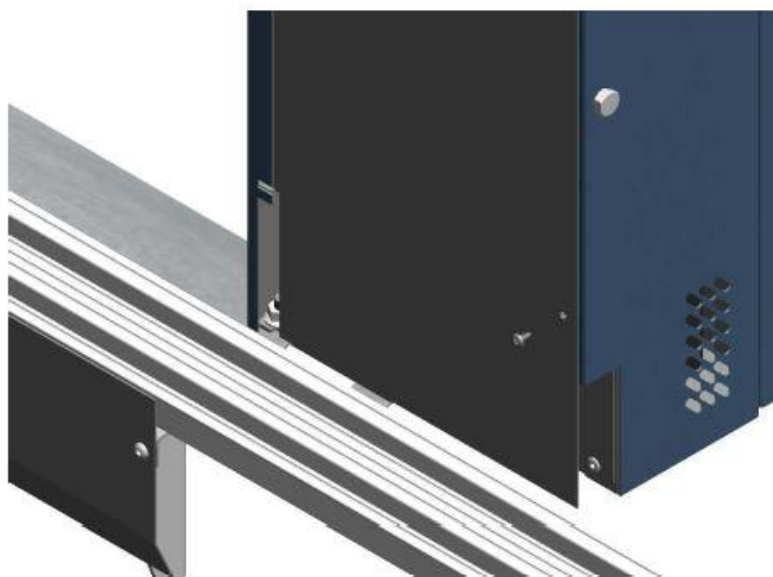


Fig.17 – Cables carter

Assemble with screws 5x10 apron (Figure 16) and with the self-tapping screws the cables cover of the cabinet (Figure 17).

## ASSEMBLY THE EMERGENCY

(May vary according to the different types of mechanisms)

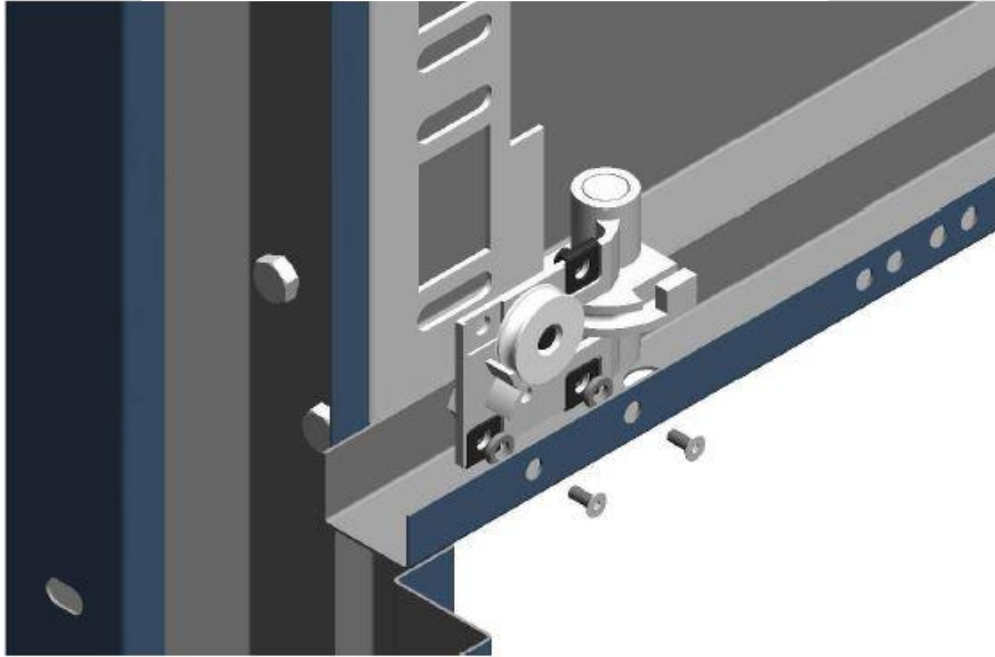


Fig.18 – Emergency Bracket

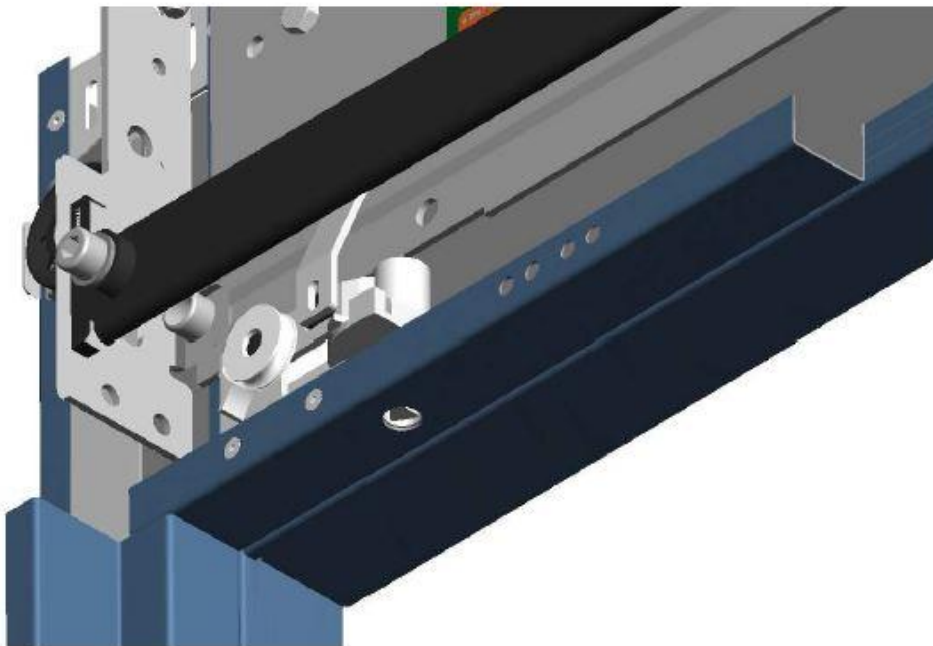


Fig.19 – Emergency

Insert the clip into the block for emergency opening of the suspension to the chassis and secure it with the screws and thicknesses provided (Figure 8) and the relay of the suspension (Figure 19) and attach the cable according to the instructions of the doors.

## ASSEMBLY CONTACT SECURITY

(May vary according to the different types of mechanisms)

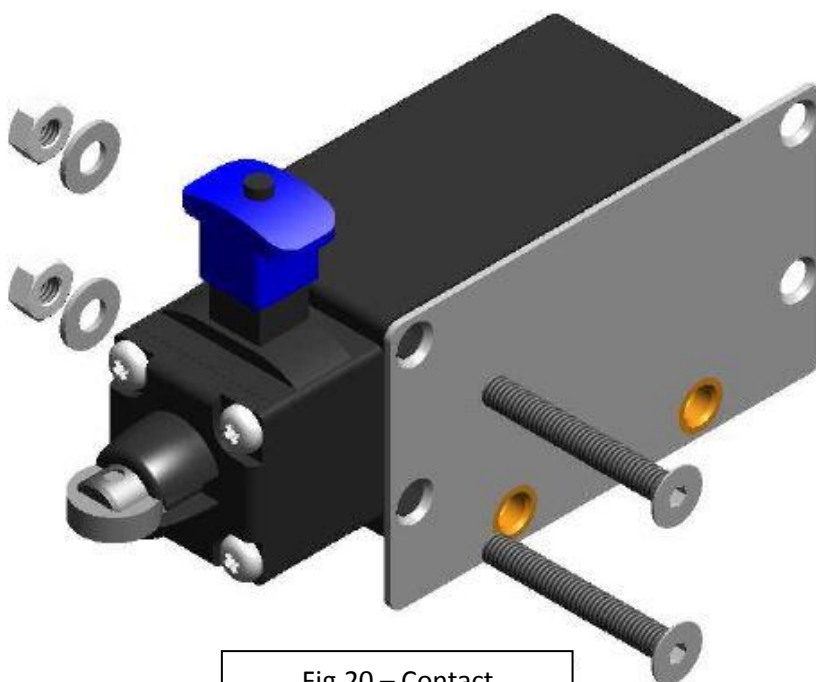


Fig.20 – Contact

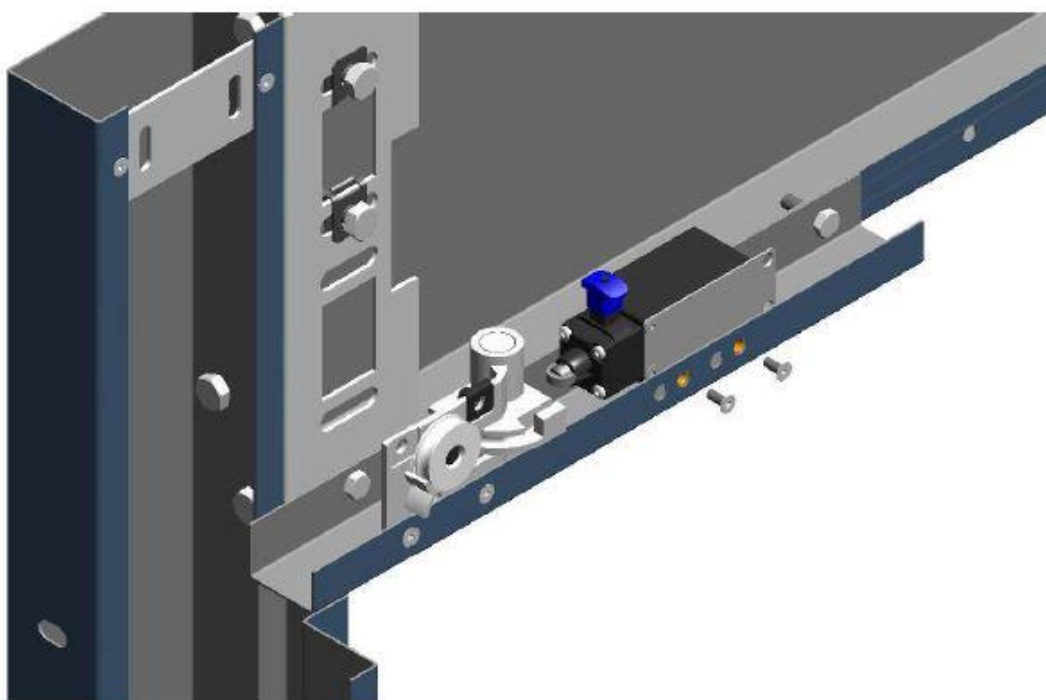


Fig.21 – Assembly Contact

Assemble contact with manual reset (Figure 20) and mount it on the frame (Figure 21). Verify that the opening with the emergency key triggers the contact.

